

Contents

1	Preparation	2
1.1	Connection	2
1.2	Installation of Updater	3
2	Updating Procedure	5
2.1	Start-up	5
2.2	IP Address Assignment	6
2.3	Updating	10

This document describes how to update ACU/NHB CM-1.

1 Preparation

1.1 Connection

1.1.1 Necessary Equipments

- Windows 98, Windows 98SE, Windows NT 4.0 or Windows 2000 personal computer with a LAN connector
- 2 Ethernet category5 straight cables
- A switching hub
- One Ethernet category5 cross cable will be an alternative to two category 5 straight cables and the switching hub.

1.1.2 Connection

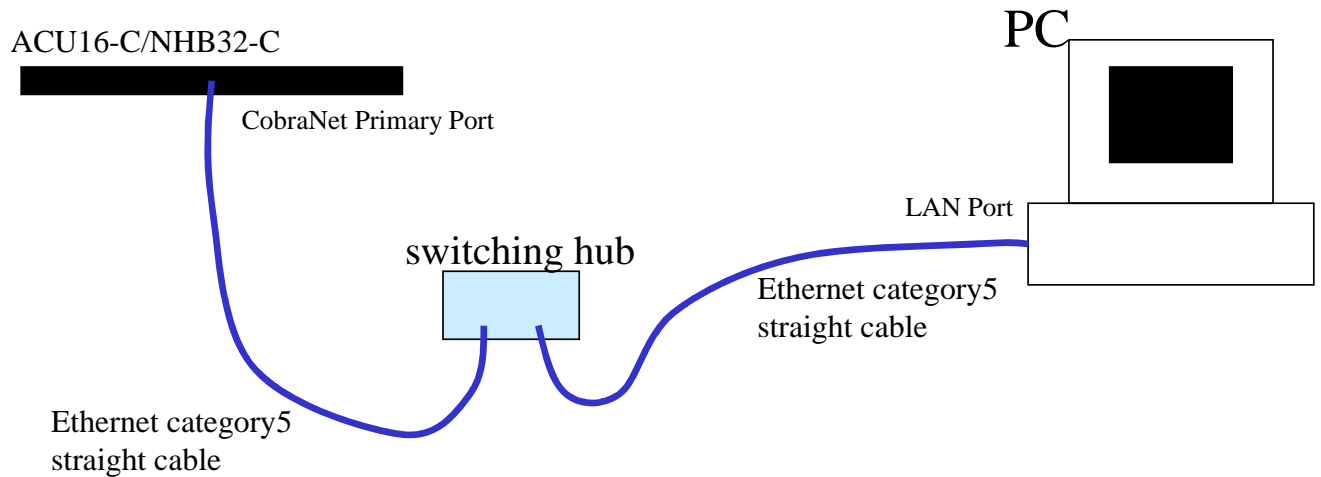
Connect a PC to ACU16-C/NHB32-C as below:

- PC --- (category5 straight cable) --- switching hub --- (category5 straight cable) --- ACU16-C/NHB32-C

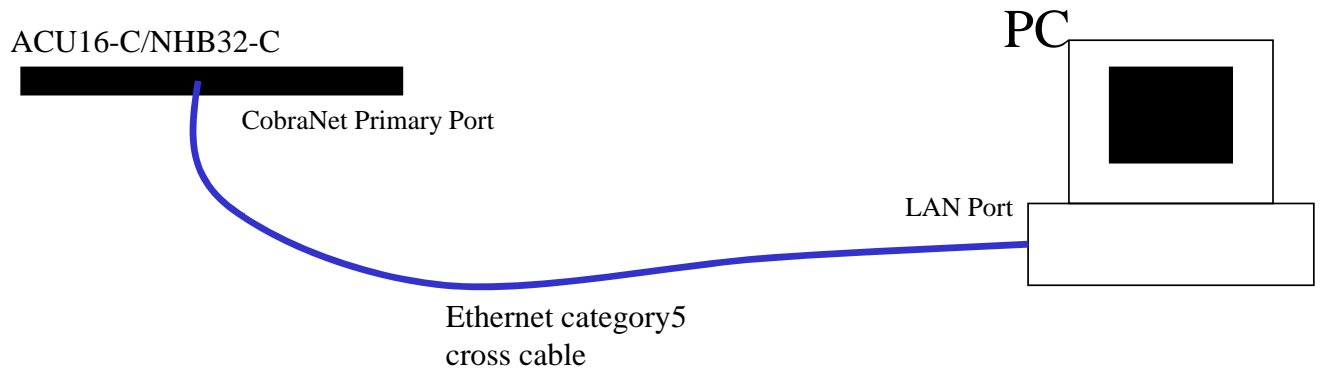
Or

- PC --- (category5 cross cable) --- ACU16-C/NHB32-C

【Schematic using hub】



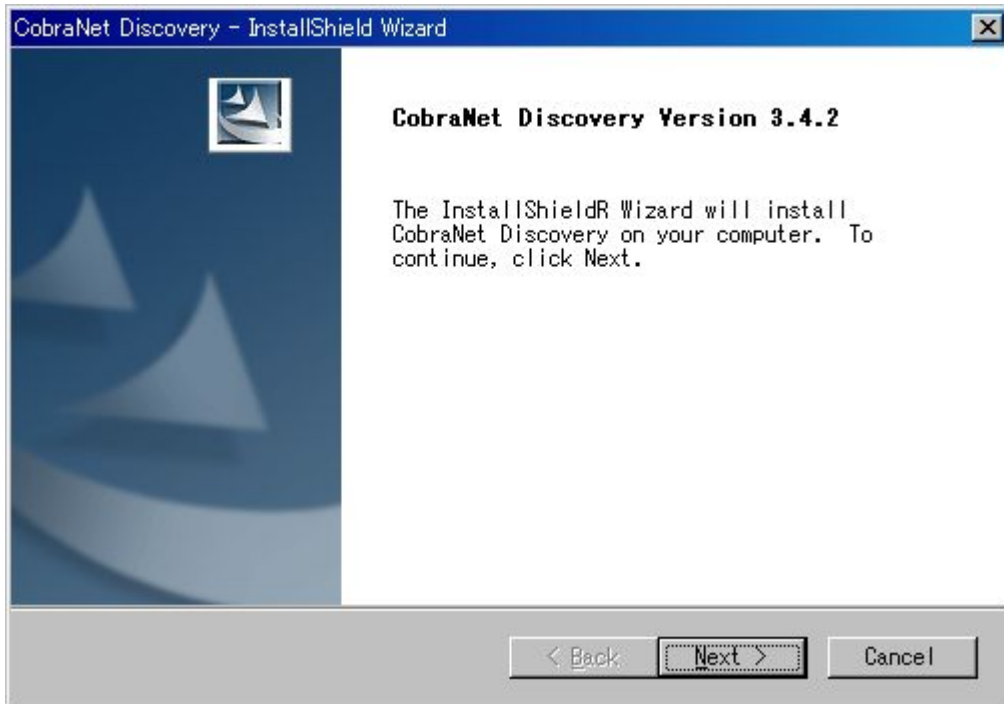
【Schematic using cross cable】



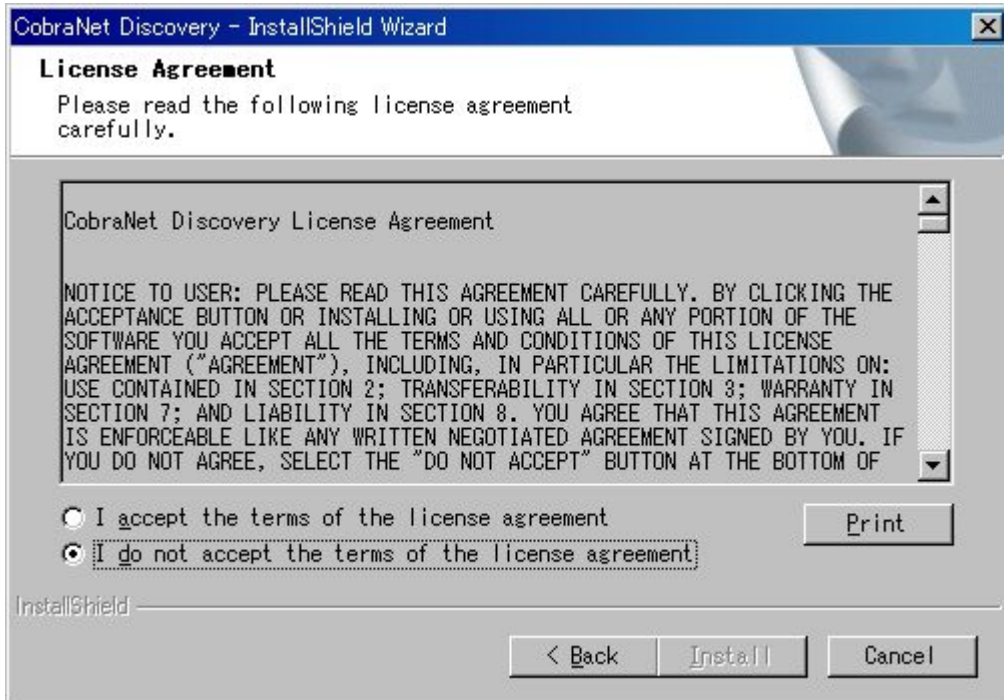
1.2 Installation of Updater

(This setting is required only for the first setup.)

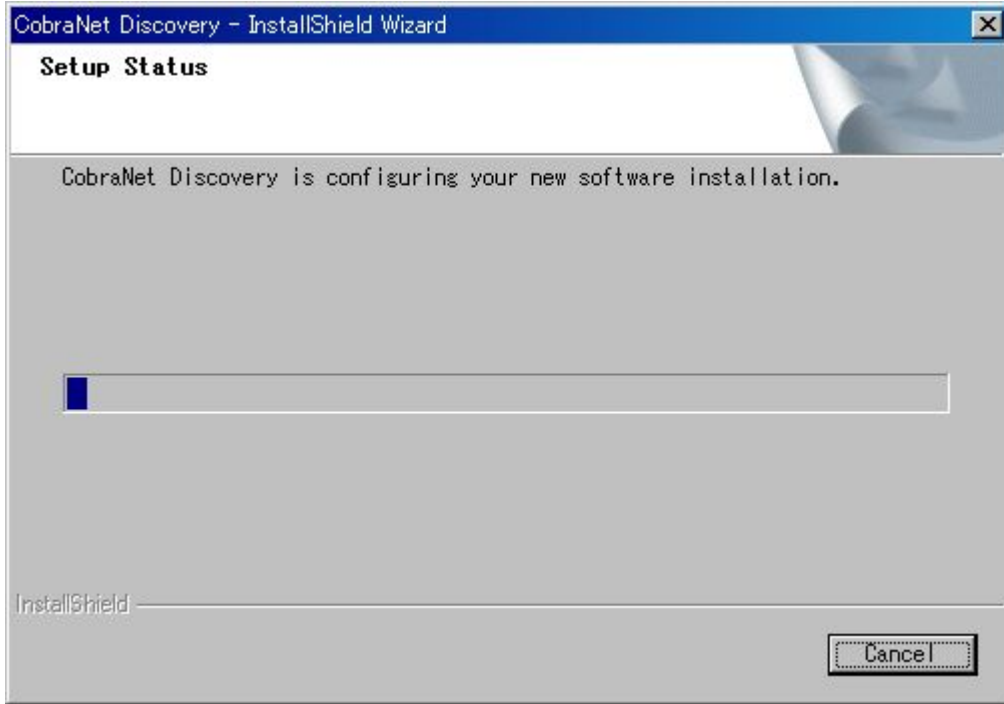
1.2.1 Double-click on the *Cndisco342.exe* to show the following window and click “Next”.



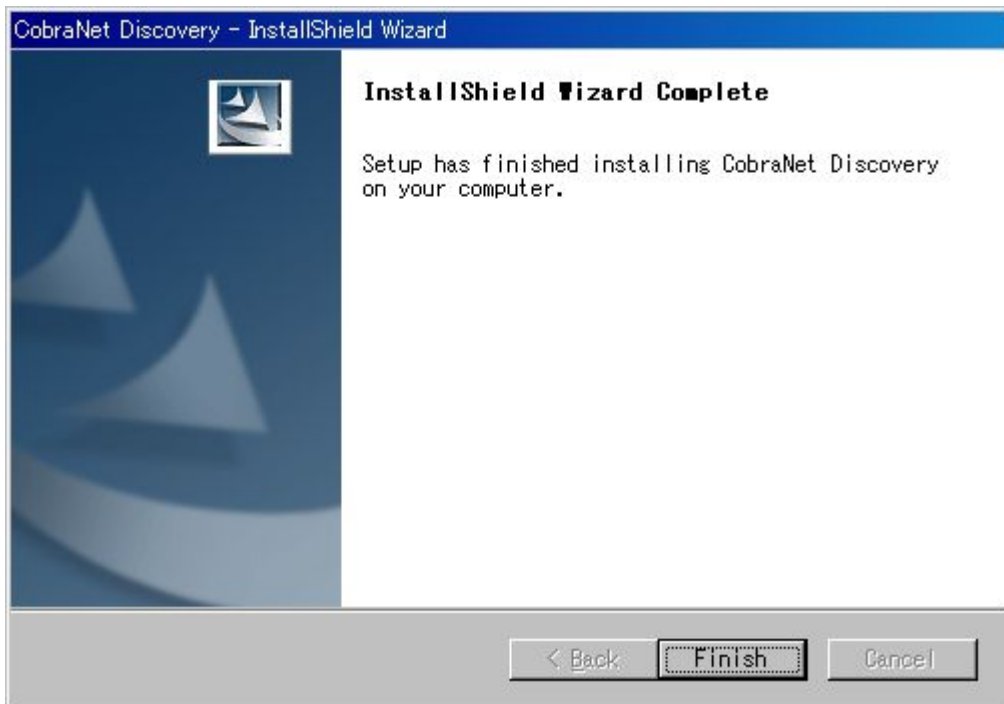
1.2.2 Check “I accept the terms of the license agreement” on the license confirmation window below and click “Next”.



1.2.3 Then the following window will appear and the installation will complete automatically for a while.



1.2.4 Installation has been completed when the following window is shown. Click "Finish" to complete the installation.

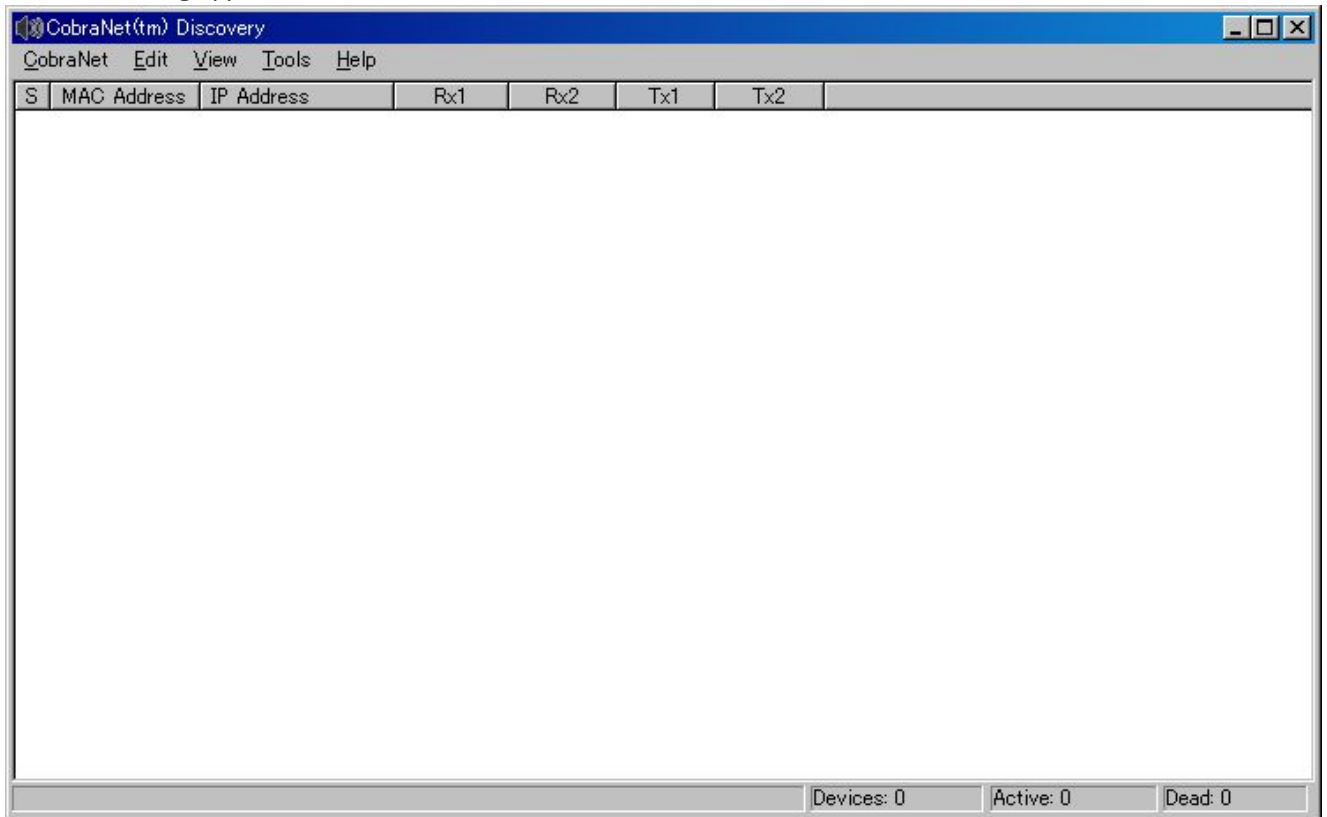


1.2.5 Copy two files: `acu16_2_9_16.bin` and `database.ini` to `C:\Program Files\Cirrus Logic\CobraNet Discovery\firmware`. Click OK if a pop-up window with a message "Do you want to overwrite the new file?" appears.

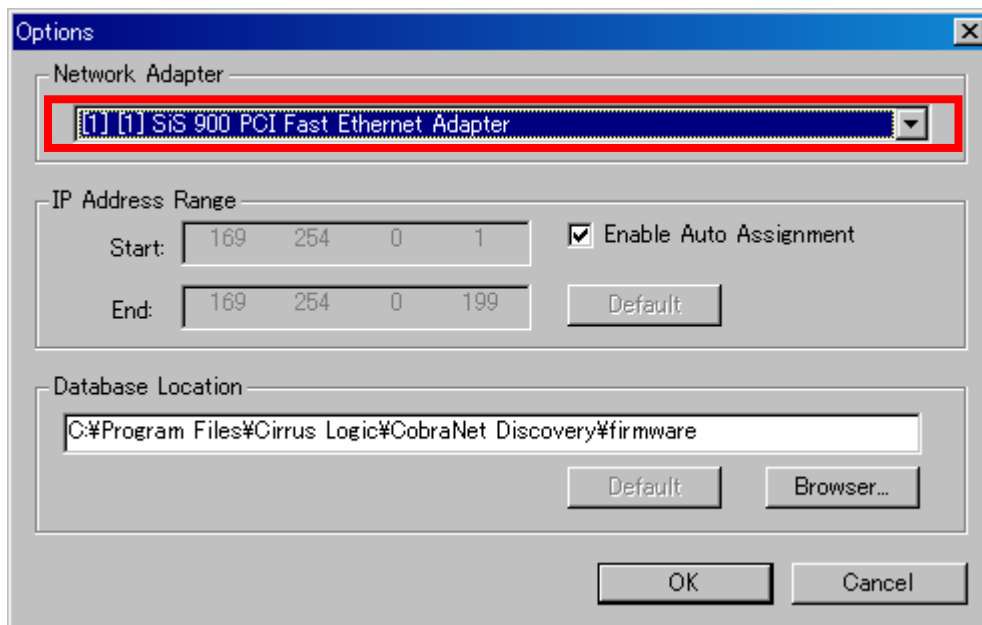
2 Updating Procedure

2.1 Start-up

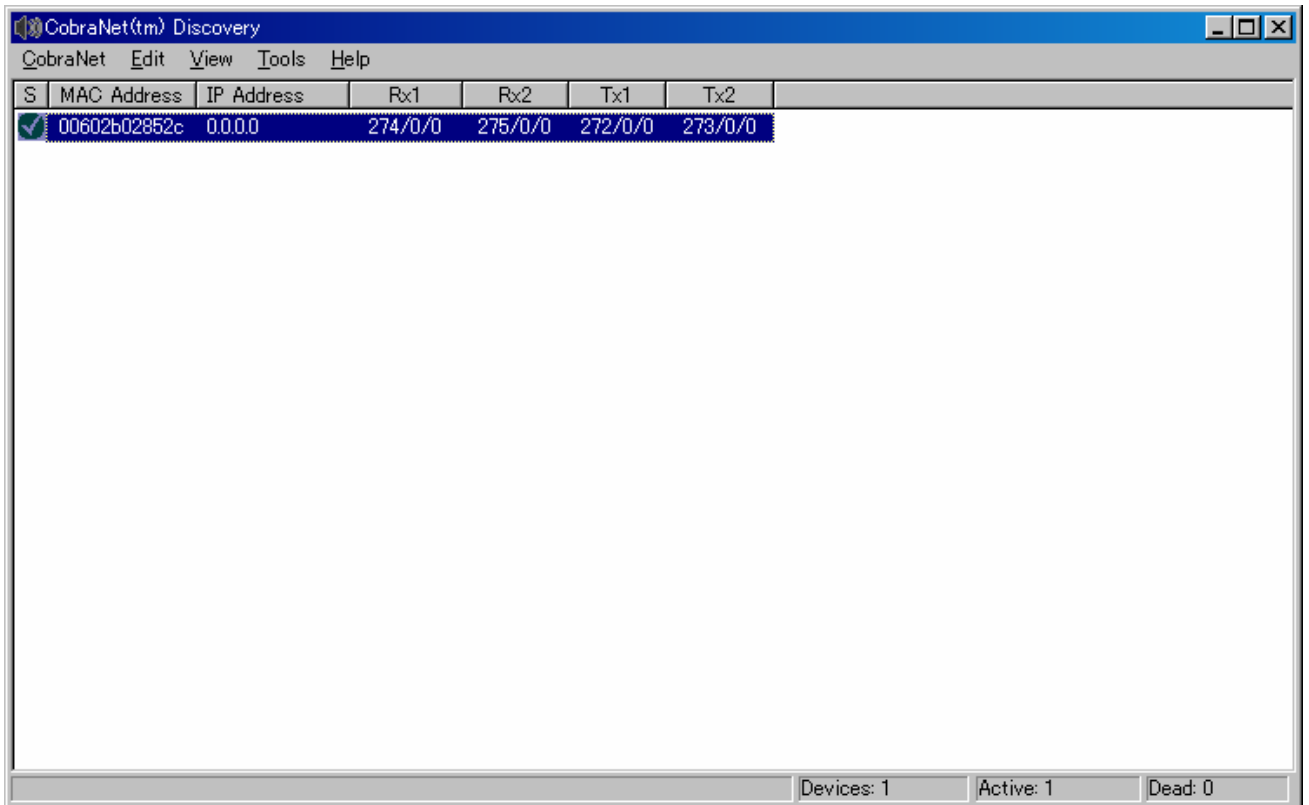
Select [All Programs | CobraNet Discovery | CobraNet Discovery] from the “Start” menu to launch the following application.



Click [Tools | Options], select the network adapter used to connect ACU16-C/NHB32-C, then click “OK”.



ACU16-C/NHB32-C will be automatically detected as below by switching on the ACU16-C/NHB32-C and the switching hub. Check the connection and the power if it is not detected.

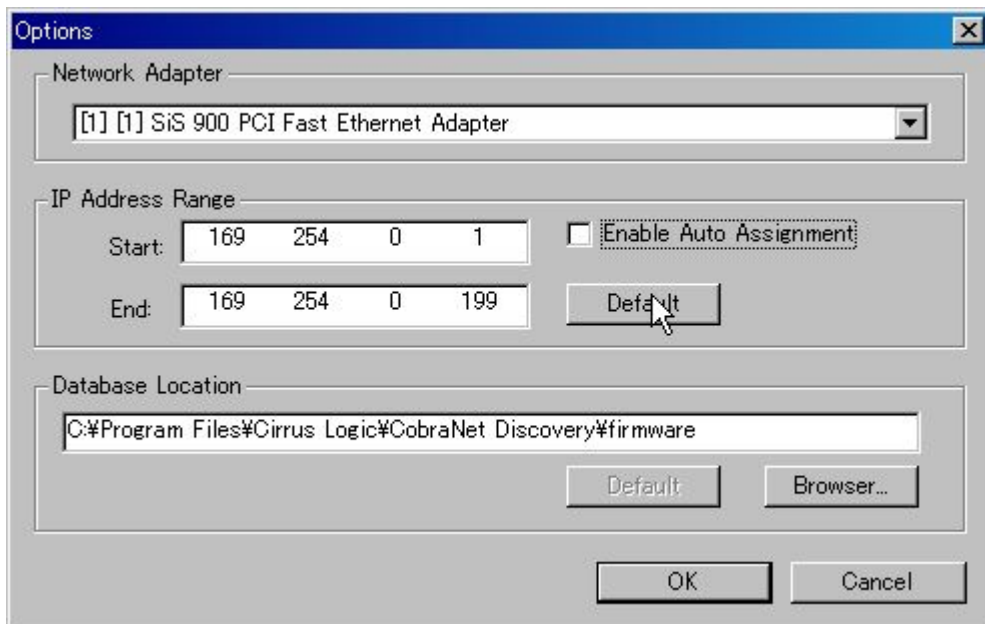


2.2 IP Address Assignment

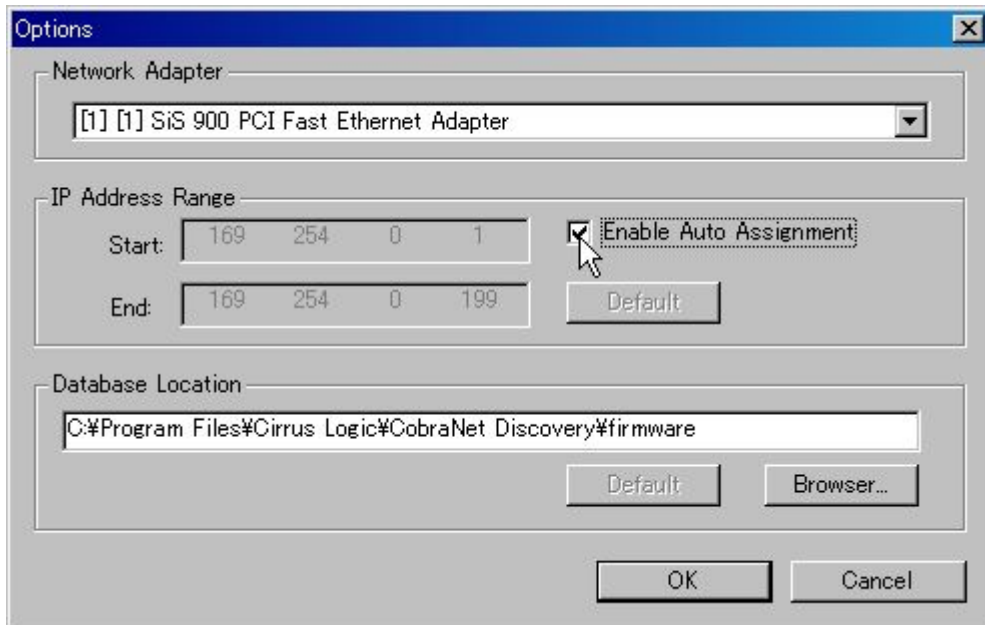
2.2.1 Automatic Setting

The IP address can be set automatically, which should be usually adopted.

Click [Tools | Options] on CobraNet Discovery to open the following window, and click the "Default" button.



Then, check "Enable Auto Assignment".



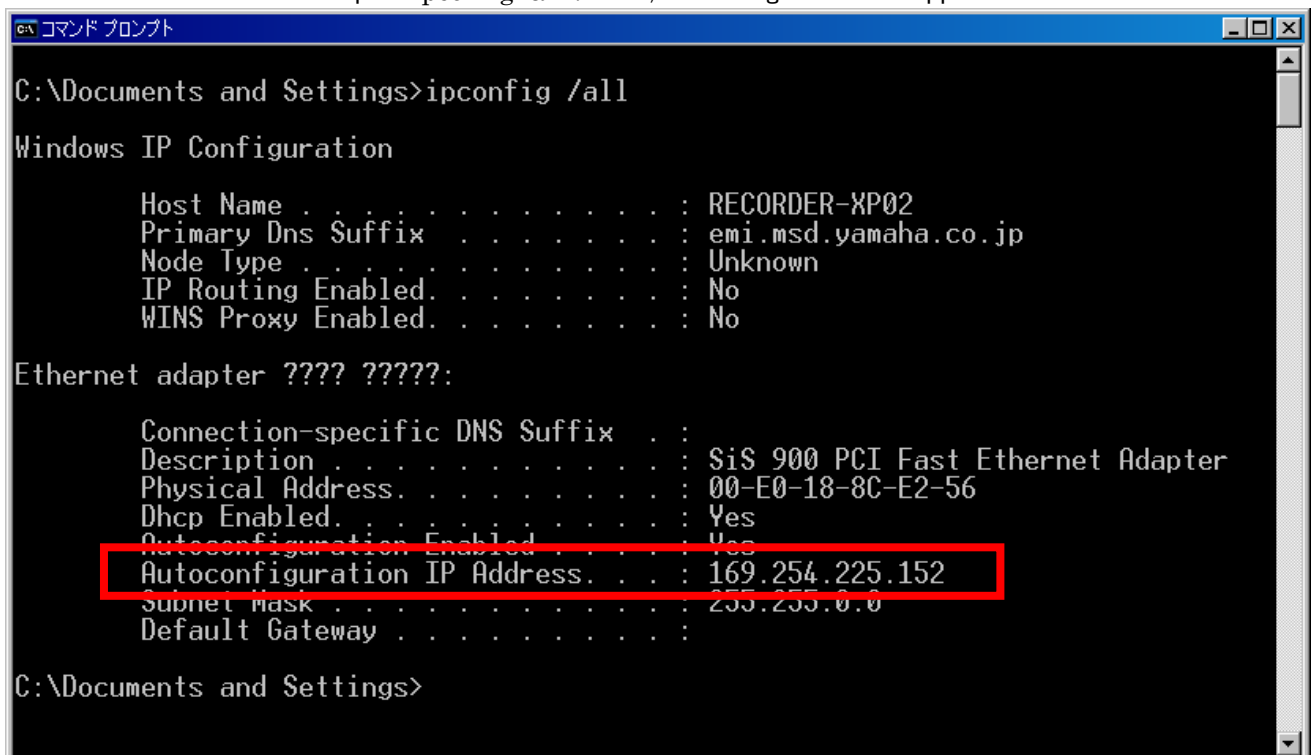
The IP Address will be automatically assigned after clicking “OK” and closing the “Options” window.

2.2.2 Manual Setting

The IP address should be assigned manually if it cannot be updated properly by automatic setting. Following are the procedure. Manual setting is not required if it is automatically assigned.

2.2.2.1 PC's IP Address Check

Select [All Program | Accessory | Command Prompt] from the “Start” menu to open the window as below and input “ipconfig /all”. Then, the configuration will appear as below.



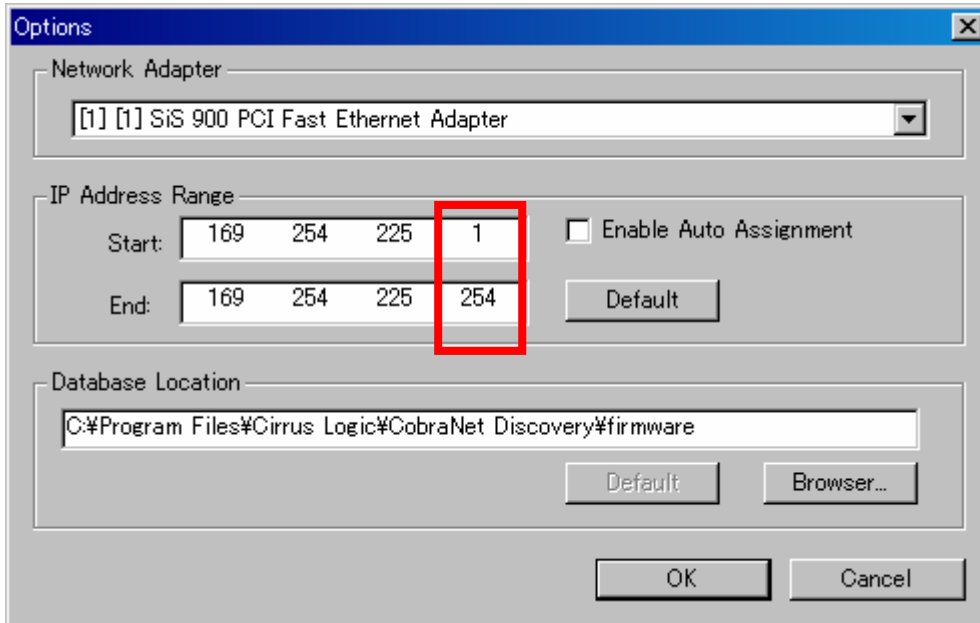
The PC's IP address is a number shown at IP address. The example IP address below is

169,254,225,152. (Numbers in the red frame)

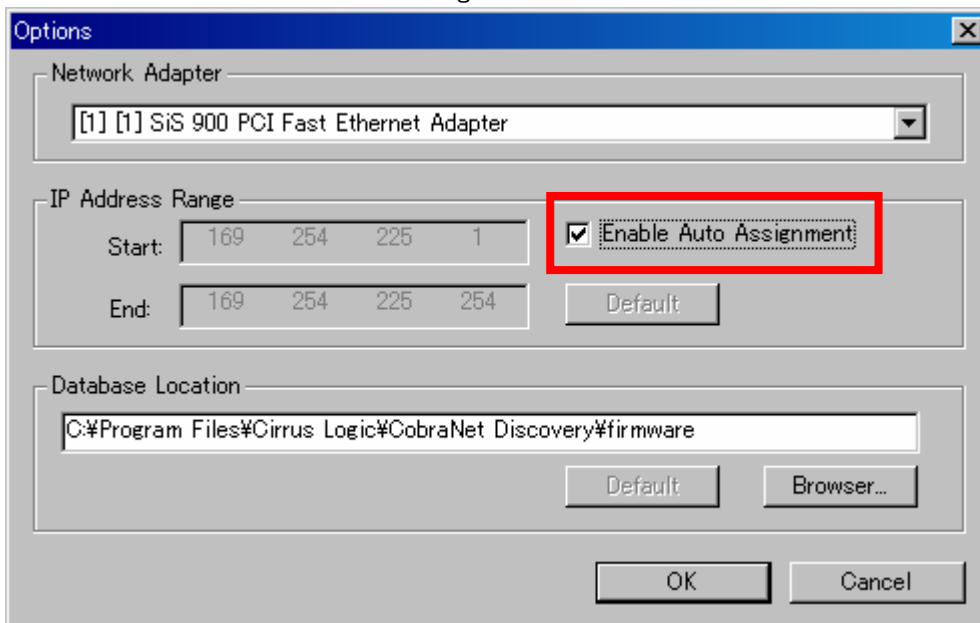
2.2.2.2 Assignment to ACU16-C/NHB32-C

Click [Tools | Options] from the menu to open the window below. Then, assign the IP address but change the last set of numbers to “1” for the “Start” column and “254” for the “End” column.

The example PC’s IP address is 169,254,225,152, which means assigning 169,254,225,1 to the “Start” column and 169,254,225,254 to the “End” column.



Check the “Enable Auto Assignment” box.



Click “OK” to assign IP address.

2.2.3 Assigned IP Address Check

The CobraNet Discovery window will show the IP address as below if it is properly assigned. (The

number may vary.)

The screenshot shows the CobraNet(tm) Discovery application window. The title bar reads "CobraNet(tm) Discovery". The menu bar includes "CobraNet", "Edit", "View", "Tools", and "Help". The main area contains a table with the following data:

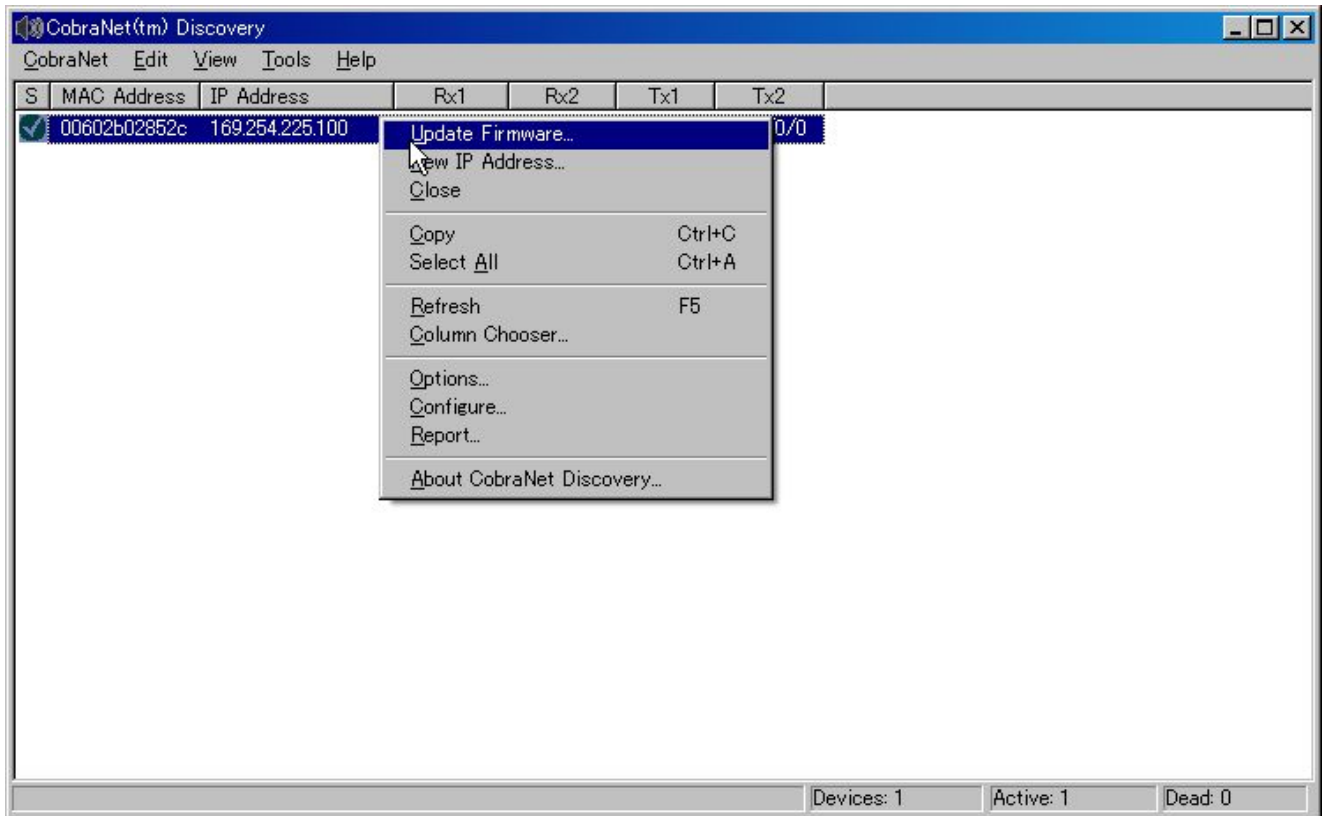
S	MAC Address	IP Address	Rx1	Rx2	Tx1	Tx2
✓	00602b02852c	169.254.225.100	274/0/0	275/0/0	272/0/0	273/0/0

At the bottom right of the window, there are three status indicators: "Devices: 1", "Active: 1", and "Dead: 0".

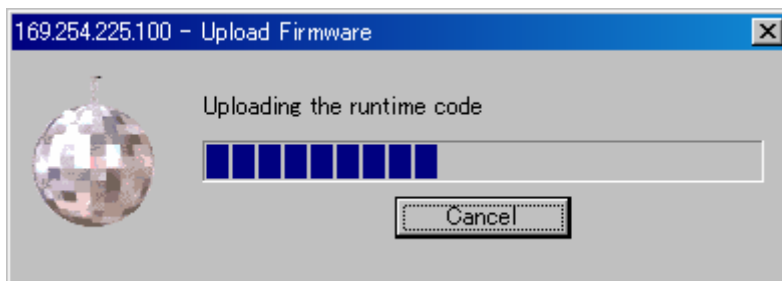
2.3 Updating

2.3.1 Current Version Check

Right-click on ACU16-C/NHB32-C in the CobraNet Discovery window, and select “Update Firmware”.

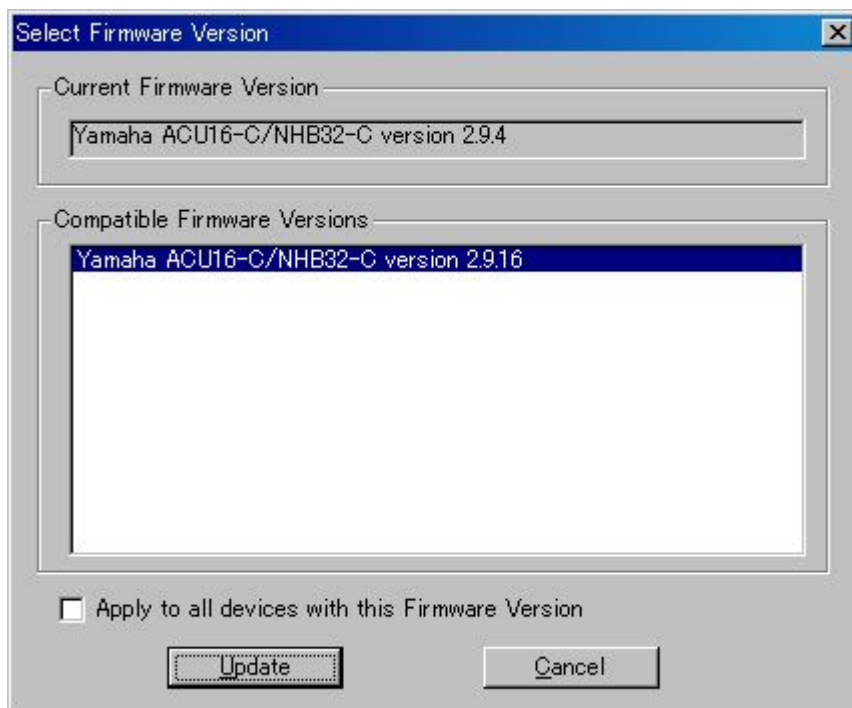


The window for updating will appear after the progress bar is shown for a while as below.



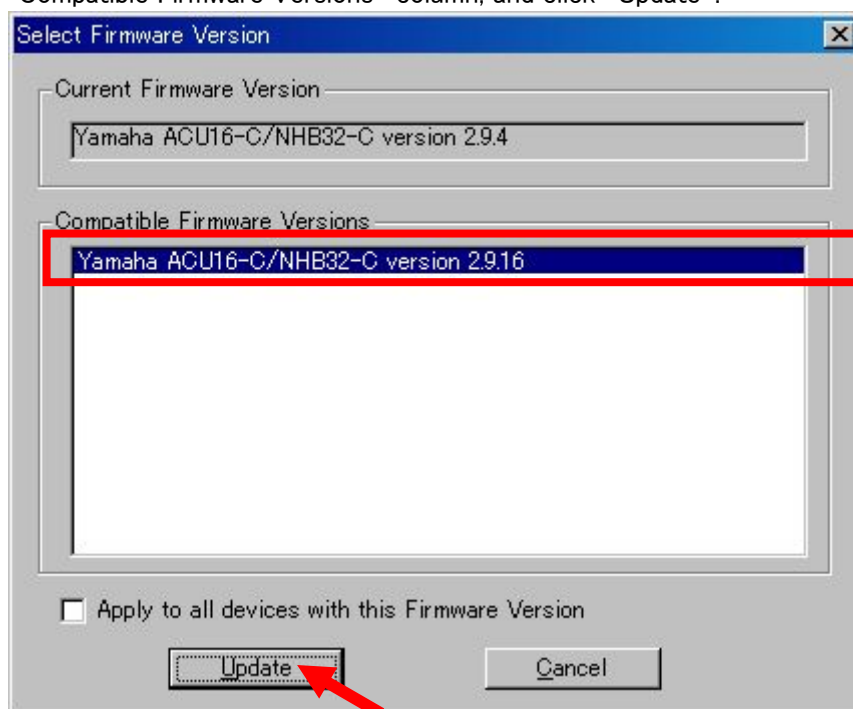
The current firmware version will be shown in the “Current Firmware Version” column on the window for updating. It should be updated if the version is older than 2.9.16 such as “Yamaha ACU16-C/NHB32-C CobraNet version 2.8.8.”

The example below shows 2.9.4, which indicates that updating is required.

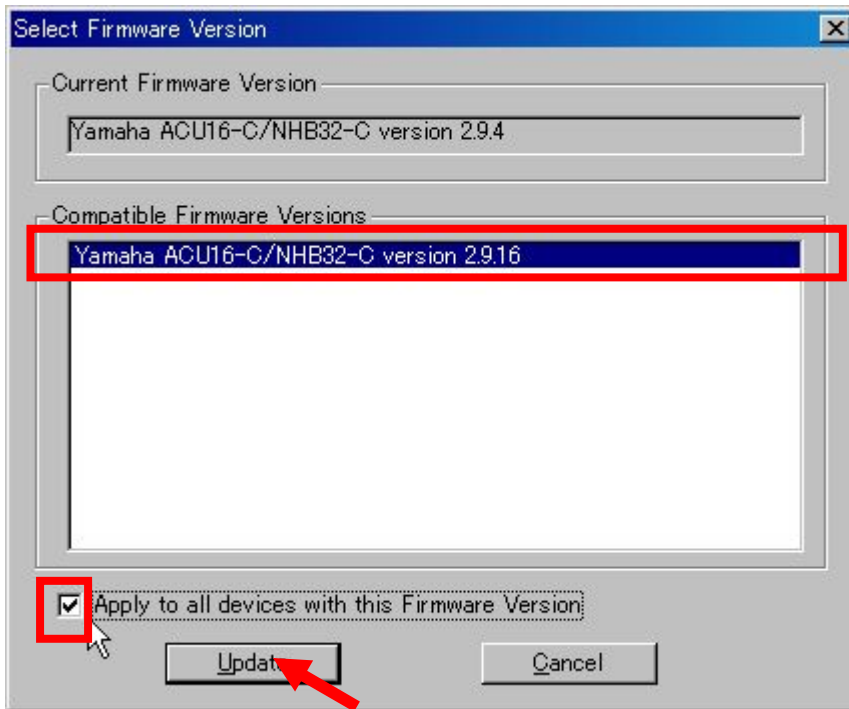


2.3.2 Updating Procedure for New Version

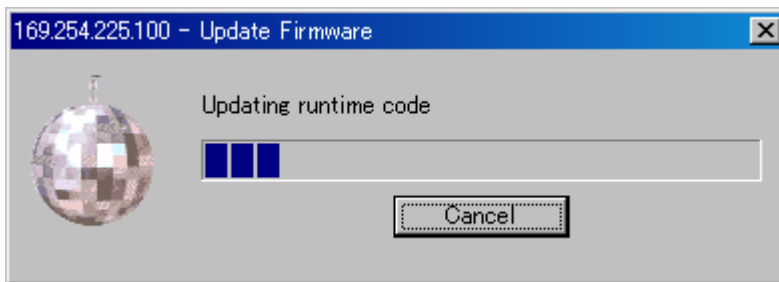
Open the window for updating in accordance with the procedure described in the “Current Version Confirmation” section. Check that “Yamaha ACU16-C/NHB32-C version 2.9.16” is selected in the “Compatible Firmware Versions” column, and click “Update”.



Multiple ACU16-C/NHB32-Cs can be updated simultaneously. In that case, check the “Apply to all devices with this Firmware version” box before clicking “Update”.



The progress bar will be shown while updating. **Do not switch the power off while this progress bar is on the display.**



Updating has been completed when the following pop-up window is shown. Now the power can be switched off.

