

Yamaha DM1000/01V96 Upgrade Guide (for Macintosh)

This document explains how to upgrade the DM1000/01V96 system software using a Macintosh computer connected via USB.

Precautions (please be sure to read these precautions)

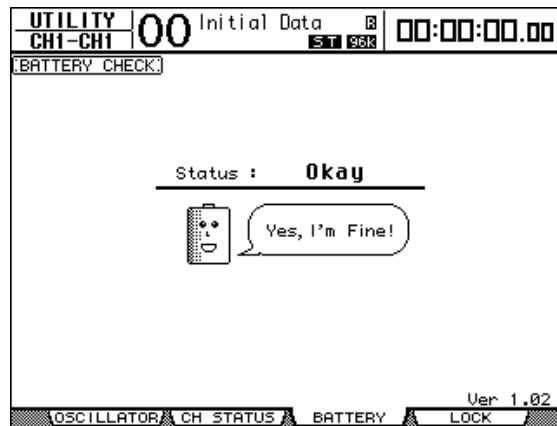
- The user assumes full responsibility for the upgrade.
- Upgrading the DM1000/01V96 erases all user memories and resets all settings to their default values. Back up important data before upgrading.
- If you fail to follow these instructions properly, or turn off the DM1000/01V96 or disconnect the USB cable while the upgrade is in progress, the DM1000/01V96 may be damaged.
- This software is for upgrading the DM1000/01V96 system software from a Macintosh computer via USB. MIDI drivers other than OMS and the Yamaha USB-MIDI driver cannot be used.
- If the upgrade fails while the new system software is being transferred to the DM1000/01V96 due to the power being turned off, the USB cable disconnected, etc., when the DM1000/01V96 is turned back on again it will startup in download mode, not normal mode. In this case you should reconnect the cable and perform the upgrade again.
- If the DM1000/01V96 does not work properly after upgrading, and you've tried upgrading several times, please contact your Yamaha dealer.
- This software and its documentation is copyright Yamaha Corporation.
- Reproducing or modifying all or part of this software or its documentation without permission is strictly prohibited.
- The screen shots in this guide are for use with this upgrade procedure only and may be different to the actual screen shots.
- Apple, Mac, and Power Macintosh are registered trademarks and Mac OS is a trademark of Apple Corporation, Inc.
- OMS is a trademark of Opcode Systems, Inc.
- All other trademarks are the property of their respective holders and are hereby acknowledged.

System Requirements

- A Macintosh computer with a built-in USB connector
- MacOS 8.6–9.2.2 (MacOS X is not supported)
- Hard disk with at least 5 MB free space
- At least 32 MB memory
- USB cable

Checking the System Version

To check the version number of your DM1000/01V96's system software, use the DISPLAY ACCESS [UTILITY] button to locate the Battery Check page shown below. The version number is displayed at the bottom.



Included Files

The following files are included in this folder:

- UpgradeE_M.pdf (this guide)
- VerUp (upgrade program)
- dm1k.pgm for DM1000 or 01v96.pgm for 01V96 (upgrade data)

Upgrading the System Software

Note: Before starting the upgrade program, quit all other programs. While the upgrade is in progress, do not start any other programs or switch between windows.

Note: If your computer enters Sleep or Energy Save mode, data transfer to the DM1000/01V96 may stop, so disable these functions to prevent this from happening.

Note: You must install OMS and the Yamaha USB-MIDI driver before upgrading. See the documentation included with the DM1000/01V96 for more information.

1 Connect the DM1000/01V96 to your PC by using a USB cable.

Note: Make sure that the Thru setting of the USB-MIDI driver is turned off. (Go to “Apple menu” → “Control panel” → “YAMAHA USB MIDI Patch,” and make sure that the “Thru ON/OFF” setting is not checked.)

Note: Do not connect any USB devices other than the DM1000/01V96, USB mouse or USB keyboard. Connect the DM1000/01V96 directly to a USB port on your PC, not via a USB hub.

2 While holding down the DM1000/01V96’s [CLEAR] button, turn on the DM1000/01V96, and hold down the button until “FLASH UPDATE” appears on the display.

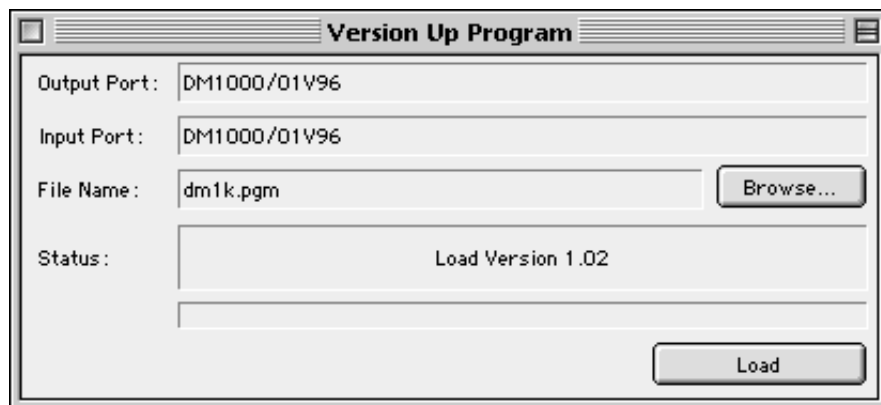
3 Double-click “VerUp” to start the upgrade program.

Note: If an error message appears, check the USB cable and make sure OMS and the USB-MIDI driver is installed correctly, then start the program again. For more information on error messages, see page 4.

4 When you start up for the first time, a Port Select dialog box will appear. Set both “Output Port” and “Input Port” to port 1.

Note: Depending on your OMS settings, the displayed port names may differ. If you select the wrong port name, you can use “Setting” menu → “Port Setting” to change your selection.

Note: If the specified port is not displayed, check your cable connections, OMS and USB-MIDI driver settings, and start the program once again.



5 Click Browse and select “dm1k.pgm” or “01v96.pgm” in this folder.

6 To start the upgrade, click Load.

Note: The upgrade takes about 5–6 minutes. While the upgrade is in progress, do not turn off the DM1000/01V96 or disconnect the USB cable. If for some reason the upgrade fails (e.g., the power cord is disconnected), the DM1000/01V96 may not work properly. If the DM1000/01V96 does not respond when you try upgrading it again, contact your Yamaha dealer.

7 When the message “Completed” appears, and the DM1000/01V96 has rebooted itself successfully, the upgrade is complete and you can quit the upgrade program.

Now you must initialize the DM1000/01V96.

8 While holding down the DM1000/01V96’s SCENE MEMORY [STORE] button, turn on the DM1000/01V96. When the confirmation message appears, release the [STORE] button, select “INITIALIZE,” and press [ENTER].

The display returns to normal when initialization is complete.

9 Use the DM1000/01V96’s DISPLAY ACCESS [UTILITY] button to select the Battery Check page, and check the system software’s version number.

This completes the upgrade procedure.

Error Messages

Note: If the same error message appears each time you try to upgrade, the DM1000/01V96 may need repairing, in which case you should contact your Yamaha dealer.

DM1000/01V96 Error Messages

“Vendor Error”

“Check Sum Error”

“Model ID Error”

Issue: These error messages indicate that the upgrade program is not working properly, or that another program is using OMS.

Solution: Quit all programs, make sure that the upgrade program is okay, then try upgrading again.

PC Error Messages

"OMS is not installed!!"

Issue: Either OMS is not installed, or another program is using OMS.

Solution: Make sure that OMS is installed, and that no other program is running.

"Not enough memory! try closing some applications"

Issue: The PC does not have enough memory.

Solution: Quit all programs except for the upgrade program, then try upgrading again.

"File not found!!"

Issue: The upgrade data file could not be found.

Solution: Check the upgrade data file, then try upgrading again.

"File read error!!"

Issue: The upgrade data file could not be read.

Solution: Check the data file, then try upgrading again.

"File format error!!"

Issue: The format of the upgrade data file is incorrect.

Solution: Check the data file, then try upgrading again.

"Device open failed!!"

Issue: Connection to OMS failed.

Solution: Make sure OMS is installed correctly, the USB cable is connected correctly, and the DM1000/01V96 is in download mode.

"Uninstall failed!!"

Issue: Software uninstallation failed.

Solution: Check the USB cable, then try upgrading again.

"Install failed!!"

Issue: Software installation failed.

Solution: Check the USB cable, then try upgrading again.