

# Yamaha DM2000 Upgrade Guide (for Macintosh)

This document explains how to upgrade the DM2000 system software using a Macintosh computer connected via USB.

## Precautions (please be sure to read these precautions)

- The user assumes full responsibility for the upgrade.
- Upgrading the DM2000 erases all user memories and resets all settings to their default values. Back up important data before upgrading.
- If you fail to follow these instructions properly, or turn off the DM2000 or disconnect the USB cable while the upgrade is in progress, the DM2000 may be damaged.
- This software is for upgrading the DM2000 system software from a Macintosh computer via USB. MIDI drivers other than OMS and the Yamaha USB-MIDI driver cannot be used.
- If the upgrade fails while the new system software is being transferred to the DM2000 due to the power being turned off, the USB cable disconnected, etc., when the DM2000 is turned back on again it will startup in download mode, not normal mode. In this case you should reconnect the cable and perform the upgrade again.
- If the DM2000 does not work properly after upgrading, and you've tried upgrading several times, please contact your Yamaha dealer.
- This software and its documentation is copyright Yamaha Corporation.
- Reproducing or modifying all or part of this software or its documentation without permission is strictly prohibited.
- The screen shots in this guide are for use with this upgrade procedure only and may be different to the actual screen shots.
- Apple, Mac, and Power Macintosh are registered trademarks and Mac OS is a trademark of Apple Corporation, Inc.
- OMS is a trademark of Opcode Systems, Inc.
- All other trademarks are the property of their respective holders and are hereby acknowledged.

## System Requirements

- A Macintosh computer with a built-in USB connector
- MacOS 8.6–9.2.2 (MacOS X is not supported)
- Hard disk with at least 5 MB free space
- At least 32 MB memory
- USB cable

## Checking the System Version

To check the version number of your DM2000's system software, use the DISPLAY ACCESS [UTILITY] button to locate the Battery Check page shown below. The version number is displayed at the bottom. If the version number is not displayed, it means the current version is 1.0.



## Included Files

The following files are included in this folder:

- Dm2kUpgradeE\_M.pdf (this guide)
- Dm2kVerUp (upgrade program)
- dm2k.bin (upgrade data)

## Upgrading the System Software

*Note: Before starting the upgrade program, quit all other programs. While the upgrade is in progress, do not start any other programs or switch between windows.*

*Note: If your computer enters Sleep or Energy Save mode, data transfer to the DM2000 may stop, so disable these functions to prevent this from happening.*

*Note: You must install OMS and the Yamaha USB-MIDI driver before upgrading. See the documentation included with the DM2000 for more information.*

### 1 Connect the DM2000 to your PC by using a USB cable.

*Note: Make sure that the Thru setting of the USB-MIDI driver is turned off. (Go to “Apple menu”→“Control panel”→“YAMAHA USB MIDI Patch,” and make sure that the “Thru ON/OFF” setting is not checked.)*

*Note: Do not connect any USB devices other than the DM2000, USB mouse or USB keyboard. Connect the DM2000 directly to a USB port on your PC, not via a USB hub.*

### 2 While holding down the DM2000’s MACHINE CONTROL [REC] button, turn on the DM2000, and hold down the button until “FLASH UPDATE” appears on the display.

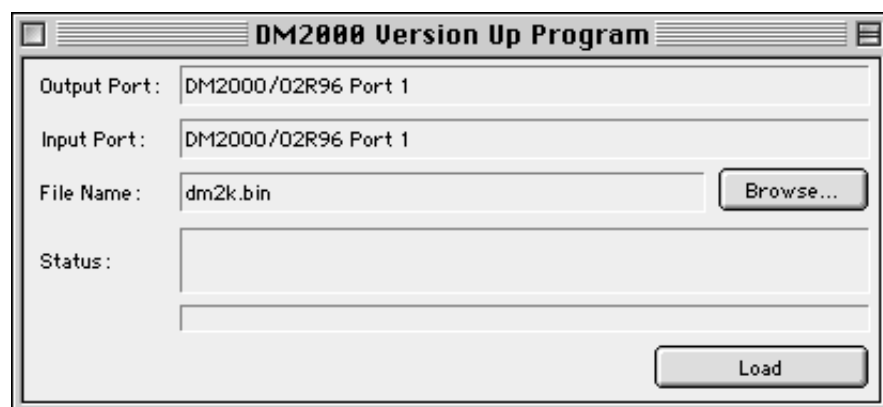
### 3 Double-click “Dm2kVerUp” to start the upgrade program.

*Note: If an error message appears, check the USB cable and make sure OMS and the USB-MIDI driver is installed correctly, then start the program again. For more information on error messages, see page 5.*

### 4 When you start up for the first time, a Port Select dialog box will appear. Set both “Output Port” and “Input Port” to port 1.

*Note: Depending on your OMS settings, the displayed port names may differ. If you select the wrong port name, you can use “Setting” menu → “Port Setting” to change your selection.*

*Note: If the specified port is not displayed, check your cable connections, OMS and USB-MIDI driver settings, and start the program once again.*



### 5 Click Browse and select the “dm2k.bin” file in this folder.

### 6 To start the upgrade, click Load.

*Note: The upgrade takes about 3–4 minutes. While the upgrade is in progress, do not turn off the DM2000 or disconnect the USB cable. If for some reason the upgrade fails (e.g., the power cord is disconnected), the DM2000 may not work properly. If the DM2000 does not respond when you try upgrading it again, contact your Yamaha dealer.*

- 7 **When the message “Completed” appears, and the DM2000 has rebooted itself successfully, the upgrade is complete and you can quit the upgrade program.**

Now you must initialize the DM2000.

- 8 **While holding down the DM2000’s SCENE MEMORY [STORE] button, turn on the DM2000. When the confirmation message appears, release the [STORE] button, select “YES,” and press [ENTER].**

The display returns to normal when initialization is complete.

<i>Note: Do not turn off the DM2000 while initialization is in progress, and do not touch the faders, as they may not calibrate correctly.</i>
--

- 9 **Use the DM2000’s DISPLAY ACCESS [UTILITY] button to select the Battery Check page, and check the system software’s version number.**

This completes the upgrade procedure.

## Error Messages

*Note: If the same error message appears each time you try to upgrade, the DM2000 may need repairing, in which case you should contact your Yamaha dealer.*

### DM2000 Error Messages

"Vendor Error"

"Check Sum Error"

"Model ID Error"

*Issue:* These error messages indicate that the upgrade program is not working properly, or that another program is using OMS.

*Solution:* Quit all programs, make sure that the upgrade program is okay, then try upgrading again.

### PC Error Messages

"OMS is not installed!!"

*Issue:* Either OMS is not installed, or another program is using OMS.

*Solution:* Make sure that OMS is installed, and that no other program is running.

"Not enough memory! try closing some applications"

*Issue:* The PC does not have enough memory.

*Solution:* Quit all programs except for the upgrade program, then try upgrading again.

"File not found!!"

*Issue:* The upgrade data file could not be found.

*Solution:* Check the upgrade data file, then try upgrading again.

"File read error!!"

*Issue:* The upgrade data file could not be read.

*Solution:* Check the data file, then try upgrading again.

"File format error!!"

*Issue:* The format of the upgrade data file is incorrect.

*Solution:* Check the data file, then try upgrading again.

"Device open failed!!"

*Issue:* Connection to OMS failed.

*Solution:* Make sure OMS is installed correctly, the USB cable is connected correctly, and the DM2000 is in download mode.

"Uninstall failed!!"

*Issue:* Software uninstallation failed.

*Solution:* Check the USB cable, then try upgrading again.

"Install failed!!"

*Issue:* Software installation failed.

*Solution:* Check the USB cable, then try upgrading again.

M.D.G., PA•DMI Division, Yamaha Corporation.

© 2002 Yamaha Corporation.